

Govt. of India
Ministry of Human Resource Development
Dept. of School Education and Literacy
Mid Day Meal Division

PAB-MDM meeting
to consider and approve AWP&B 2018-19

(Date of the meeting: 13.06.2018)



APPRAISAL NOTE

STATE: Haryana

INDEX

Sl. No.	CHAPTER	Page no.
	Pre-requisite steps for submission of AWP&B	
Part-A	General Information	
Part-B	Review of performance during 2017-18	
Part-C	Recommendations of Appraisal team and quantification of variables for central assistance during 2018-19.	
Part-D	Fact sheet.	

Status on Pre requisite steps required for submission of AWP&B

Pre-requisite step	Status
Plan should be approved by SSMC Meeting	Yes
100% payment of honorarium shall be made to cook cum helpers up to 31 st March, 2018.	No
100% payment of cost of food grains shall be made to FCI up to 31st March, 2018	No
Separate and detailed MME plan.	Yes
Bank account should be opened for cook cum helpers	Yes
Plan should also be submitted through MDM-MIS	Yes
Annual and Monthly data entry for the FY 2017-18 should be completed up to 31 st March, 2018.	Yes
ATN on commitments given by the State Govt. during PAB Meeting of 2017-18.	Yes
ATN on findings of JRM reports	Yes
Plan should be submitted within the scheduled date in hard and soft copies both.	Yes

Issues

- Delay (2- 3 months) in release of funds to the implementation agencies
- Less food grain used in cooking of MDM in primary (72 gms) and Upper primary (106 gms) per child per day.
- Rs.3.68 and Rs.5.16 provided for cooking cost per child per day in primary and upper primary respectively.
- Construction is yet to start for 987 Kitchen-cum-stores sanctioned during 2006-07 to 2011-12.
- No meeting of State Level Steering-cum-Monitoring Committee (SLSMC) convened during 2017-18.
- Only 47% Institutes Inspected.
- Food grain supply chain management issue in 4 districts (Panipat, Gurugram, Hisar and Yamuna Nagar) which had negative closing balance on 31.03.2018.
- No Meetings of District committee headed by Dist. Collector in 4 Districts
- Delay in submission of information to GOI
- Mismatch between AWP&B data and MIS data.
- Social Audit not yet started.
- Kitchen garden in 10 schools only.

Best Practices

- Additional Contribution of Rs.1500 for Honorarium to cook cum helper.
- LPG facility in all schools.
- Double Fortified Salt is used for cooking MDM in all the districts.
- Storage bins provided in all the schools.
- Celebration of Beti ka Janamdin; School me Abhinandan.
- Free home base education, meals and medical facility to children with special needs through mobile van named KALAM EXPRESS in district Jind.
- Provision of steel eating plates and spoons in all schools for MDM.
- Medical check up of CCH twice a year.

Part-A : General Information

Mid-Day-Meal Scheme was launched on 15 August, 1995 in the 44 educationally backward Community Development blocks of 6 districts of the State at primary level. Free dry foodgrains @ 3.0 Kg. (1.5 kg wheat and 1.5 kg rice) per child per month was distributed. In 1995-96 cooked food was provided in 17 blocks of these 6 districts- Bhiwani, Hisar, Mahendergarh, Rewari, Kaithal and Sirsa. The State Government spent Rs. 1.45 per child per school day as cooking cost for this. In the year 1996-97, the scheme of cooked meal was extended to 44 more blocks (educationally backward blocks). In the year 1996-97 itself distribution of dry food grains @ 3.0 Kg per child per month was started. In January 2003, cooked food as Mid-Day-Meal was started in 17 blocks. These blocks were having population which was economically backward and educationally backward. The cooked food was started in all the Govt, Local Bodies, Govt Aided Primary Schools from 15.08.2004. The scheme was extended to all middle schools also during the year 2008-09. Govt. of India provides wheat & Rice for this scheme. It is essential to serve 100 gms cooked rice/wheat to the students of primary and 150 gms cooked rice/wheat to the students of middle classes. It is also essential to give 12 gms protein, 450 Calories for primary classes and 20 gms protein and 700 calories for middle classes respectively.

Objectives of the Programme:-

The main objectives of the programme are:-

- i) To increase enrolment, retention and to tone up the learning abilities of the beneficiaries, especially of children belonging to poor and down trodden sections of the society;
- ii) To provide nutritious meal to the school going children to achieve the goal of sound mind in healthy body;
- iii) To promote friendship and feelings of common brotherhood among the children belonging to different caste, colour and creed by providing meals to them together and also to increase their retention in schools.

1. Basic Information:

(Year 2017-18)

S. No.	INDICATORS	STATUS		
		PRY	U PRY	TOTAL
1. No. of Institutions		PRY	U PRY	TOTAL
i)	Approved by MDM-PAB for 2017-18	8153	6837	14990
ii)	Covered during the year	8153	6837	14990
2. No. of Children				
i)	Approved by MDM-PAB	841135	579943	1421078
ii)	Enrollment as on 30.9.2017	964877	636205	1601082
ii)	Average No. of children availed MDM during 01.04.2017 to 31.03.2018*	927837 (96%)	621827 (98%)	1549664 (97%)
3. Coverage of children as per Quarterly Progress Report (QPR)				
i)	Average no. of children availed MDM as per QPR-1	903202	628880	1532082
ii)	Average no. of children availed MDM as per QPR-2	924812	618041	1542853
iii)	Average no. of children availed MDM as per QPR-3	924041	624932	1548973
iv)	Average no. of children availed MDM as per QPR-4	917744	615678	1533422
4. No. of Working Days				
i)	Approved for 2017-18	242	225	
ii)	Covered during 2017-18	242	225	
5. Per unit cooking cost Per child per day (in Rs.)				
AVERAGE UNIT COOKING COST PCPD		4.13	6.18	
State's contributions in cooking cost per child per day		1.65	2.47	

*percentage to enrolment

The minimum mandatory State Share is Rs. 1.65 and Rs. 2.47 per child per day for primary and upper primary respectively.

Part-B : Review of Performance in 2017-18 (01.04.17 to 31.03.2018)

Based on the information provided by the State Government in its AWP&B 2018-19, the performance during 2017-18 (01.04.17 to 31.03.2018) was reviewed. The major issues in implementation during 2017-18 are summarized as under: -

2. Coverage of Institutions

Coverage in terms of No. of institutions.

Difference between PAB Approval (Target) Vs No. of institutions covered (Achievement) –

i) PRIMARY		
The number of existing institutions		= 8153
Number of institutions covered during 01.04.17 to 31.03.18		= 8153 (100%)
ii) UPPER PRIMARY WITH PRIMARY CLASSES		
The number of existing institutions		= 4110
Number of institutions covered during 01.04.17 to 31.03.18		= 4110 (100%)
ii) UPPER PRIMARY		
The number of existing institutions		= 2727
Number of institutions covered during 01.04.17 to 31.03.18		= 2727 (100%)

The information reveals that all the eligible institutions in the State have been covered under MDMS.

2.1 Coverage of Children

2.1.1 Coverage against Enrolment :

a) Primary - Coverage in terms of No. of children. Difference between Enrolment vs Average No. of Children Availed MDM (Achievement) (Refer Table 2.3 of the Analysis Sheet).

Total Enrolment as on 30.09.2017 = 964877

Average number of children availed MDM during 01.04.17 to 31.03.18 = 927837 (96%)

b) Upper Primary : Coverage in terms of No. of children. Difference between Enrolment vs Average No. of Children Availed MDM (Achievement) – UPPER PRIMARY (Refer Table 2.4 of the Analysis Sheet).

Total Enrolment as on 30.09.2017 = 636205

Average number of children availed MDM during 01.04.17 to 31.03.18 = 621827 (98%)

2.1.2 Coverage against PAB-MDM approval :

a) Primary : Coverage in terms of No. of children. Difference between PAB Approval (Target) vs Average No. of Children Availing MDM (Achievement) (Refer Table 2.5 of the Analysis Sheet).

The number of children approved by MDM PAB for 2017-18 = 841135

Average number of children availed MDM during 01.04.17 to 31.03.18 = 927837 (110%)

b) Upper Primary: Coverage in terms of No. of children. Difference between PAB Approval (Target) Vs Average No. of Children Availing MDM (Achievement) (Refer Table 2.6 of the Analysis Sheet).

The number of children approved by MDM PAB for 2017-18 = 579943
Average number of children availed MDM during 01.04.17 to 31.03.18 = 621827(107%)

2.1.3 No. of Meals: Difference between No. of meal to be served (Target) Vs. No. of meals served (Achievement)- PY+U PY (Refer Table 2.7 of the Analysis Sheet).

The number of meals to be served during 01.04.17 to 31.03.18 = 3455.36 Lakh
The number of meals served during 01.04.17 to 31.03.18 = 3486.74 Lakh(101%)

2.2 FOODGRAINS (PRIMARY + UPPER PRIMARY)

2.2.1 Level of Opening balance as on 01.04.17: (Refer Table 3.2 of the Analysis Sheet).

The opening balance of food grain with the State as on 01.04.2017 was 337.77 MTs (1%). Thus, the State had not maintained the one months (10%) buffer stock of food grain at commencement of FY 2017-18. Gurugram had 2% negative balance of food grains. The total allocation of food grains during 2017-18 is 41407.40 MTs.

2.2.2 Level of unspent balance as on 31.03.18: (Refer Table 3.3 of the Analysis Sheet).

The unutilized food grains with the State as on 31.03.2018 was 396.75 MT (1%). However two districts namely Mewat and Rewari had more than 10% of unutilized food grains with them of the allocation i.e. 12% and 43% respectively and four districts namely Yamunanagar (-1%), Hissar (-3%), Gurugram (-8%) and Panipat (-32%) had negative unspent balance of food grains. This indicates problem in the food grain supply chain management.

2.2.3 Availability of Food grains: (01.04.17 to 31.03.18) (Refer Table 3.5 of the Analysis sheet).

The State Government Lifted 29813.15 MTs of food grain from Food Corporation of India. The State had unutilized food grain of 337.77 MTs with it at the beginning of the year. Thus the total availability of food grain with the State was 30150.92 MTs which is 73% of the annual allocation of 41407.40 MTs of food grains to the State during 2017-18.

2.2.4 Utilization of food grains: (Refer Table 3.7 of the Analysis sheet)

The State utilized 29754.18 MTs (72%) of food grains against the allocation of 41407.40 MTs. The inter-district utilization ranged between 53% to 86%.

2.2.5 Payment of cost of foodgrains to FCI: (Refer Table 3.9 of the Analysis sheet)

The FCI has submitted bills for Rs. 821.33 lakh during 2017-18 towards cost of food grains. The State has made payment of Rs.817.10 lakh (99%) to FCI.

2.3 COOKING COST (PRIMARY + UPPER PRIMARY)

2.3.1 Level of Opening balance as on 01.04.17: (Refer Table 4.1.1 of the Analysis Sheet)

The opening balance of cooking cost with the State as on 01.04.2017 was Rs. 4514.51 lakh (26%) of the annual allocation. The total allocation of food grains during 2017-18 is Rs. 17080.20 Lakh. However some districts had more than 30% opening balance in the beginning of the year namely Sirsa(31%), Jhajjar (33%), Faridabad (40%), Rewari(42%), Yamunannagar(43%), Mahendergarh(51%) and Jind (57%). The availability of such a huge opening balance indicates that the scheme was not implemented properly in these districts.

2.3.2 Level of closing balance as on 31.03.2018 : (Refer Table 4.1.2 of the Analysis Sheet)

The closing balance of cooking cost was Rs. 1757.85 lakh (10 %) of the annual allocation of Rs. 17080.20 lakh. However, 8 districts had relatively higher closing balance of cooking cost in the range between 11% to 77% and 5 district had negative closing balance in the range of (-)9% to (-)21%.

2.3.3 Utilization of Cooking cost : (Refer Table 4.5 of the Analysis Sheet).

The State has utilized Rs. 14886.46 lakh (87%) against the allocation of 17080.20 lakh during 2017-18. However 5 districts utilized more than the annual allocation namely Rohtak (102%), Panchkula(106%), Hissar (129%), Jhajjar (139%) and Rewari(167%). State needs to look into the reasons of having more than 100% of utilization of cooking cost.

2.4 Reconciliation of utilization and performance during 2017-18 (01.04.17 to 31.03.2018)

2.4.1 Mismatch in utilization of Food grains vis-à-vis cooking cost: (Refer Table – 5.1 of Analysis Sheet)

Ideally the percentage utilization of cooking costs and food grains should tally with each other. The utilization of cooking cost (87%) and food grains (72%). Thus, there is 15% mismatch in the utilization of cooking cost and food grains. The mismatch in food grains and cooking cost utilization ranges from 99% in Rewari to (-)30% in Ambala. Such a huge mismatch indicates issues relating to improper utilization of food grain and cooking cost.

2.4.2 Reconciliation of Food grains utilisation vis-à-vis No. of Meals served during 2017-18 (Refer Table – 5.2 of Analysis Sheet)

As per the number of meals served in primary and upper primary, the food grain utilization should have been 41882.68 MTs whereas the actual utilization reported by the State is 29754.18 MTs. Thus, the State has served 72 grams of food grain in primary. Similarly, in Upper Primary the State has provided only 106 grams of food grains. This is below the prescribed food norms for primary as well as upper primary respectively and results in provision of less nutrition and energy to the children under meals.

2.4.3 Reconciliation of cooking cost utilisation vis-à-vis No. of Meals served during 2017-18 (Refer Table – 5.3 of Analysis Sheet)

As per the number of meals served in primary and upper primary, Rs. 17276.50 lakh of cooking cost should have been utilized whereas the actual utilization reported by the State is 14886.46 lakh. The State is giving Rs.3.68 and Rs. 5.16 per child per day in cooking cost for primary and upper primary

against approved cooking cost of Rs.4.13 and Rs.6.18 per child per day for primary and upper primary respectively.

2.5 Cook-Cum-Helper (PRIMARY + UPPER PRIMARY): (Refer Table – 6.2 of Analysis Sheet).

The State has engaged 30193 cook-cum-helpers (CCH) against PAB approval of 30423. Thus, 230 CCH have not been engaged by the State. These CCH are to be paid honorarium @ Rs.1000.00 per month per cook-cum-helper for ten months in a year. This honorarium is shared between the Centre and the State in 60:40 ratio. However, States can contribute more from their own resources. The State is making additional contribution of Rs.1500 per CCH per month over and above its minimum mandatory contribution of Rs.400 per CCH per month. Thus the State is contributing Rs.1500 per month per CCH.

The State had nil opening balance on 01.04.2017. An amount of Rs. 7605.76 lakh was released for payment of honorarium to CCH. Thus Rs. 7605.76 lakh were made available to the State during 2017-18. The expenditure is Rs. 7288.25 lakh (96%).

The enrolment of the students during 2018-19 has improved. Therefore, the State proposes to engage the remaining 230 CCH against the already approved 30423 cook-cum-helpers during 2018-19.

2.6 Utilization of MME (Refer Table – 7.2 of Analysis Sheet)

The State had opening balance of Rs.185.35 lakh as on 01.04.2017. The annual allocation was Rs.245.42 lakh against which 59.88 lakh were released during 2017-18. Thus the State had total availability of Rs. 245.23 lakh during 2017-18. The State has utilized only Rs. 129.73 lakh (53%) of the annual allocation.

2.7 Utilization of Transportation Assistance (Refer Table – 8.2 of Analysis Sheet)

The State had opening balance of Rs.45.84 lakh as on 01.04.2017. The annual allocation for Transport Assistance during 2017-18 is Rs. 310.56 lakh. The State had lifted 29813.15 MTs of food grain from FCI during 2017-18. Thus, transportation assistance @ 75 per quintal for carrying the food grains to schools is Rs. 223.60 lakh. The State has incurred the expenditure of Rs. 215.47 lakh (69% of annual allocation) on transportation of food grains from FCI godowns to schools.

2.8 Construction of Kitchen-cum-stores (Reference Table -9.1.3 of Analysis Sheet)

The non-recurring central assistance of Rs. 11710.54 lakh was released during 2006-07 to 2009-10 for the construction of 11483 kitchen-cum-stores. The State has utilized Rs. 9132.00 lakh non-recurring central assistance for the construction of 9132 i.e. (80%) of sanctioned kitchen-cum-stores. The State may ensure that the remaining kitchen-cum-stores are constructed during 2018-19 or surrender the central assistance along with interest to MHRD because the central assistance is lying unutilized since 2009-10.

2.9 Procurement of Kitchen devices (Reference Table -9.2.3 of Analysis sheet)

The non-recurring central assistance of Rs. 773.30 lakh was released during 2006-07 to 2013-14 for the procurement of kitchen devices in 15466 schools @ Rs. 5000/- each school. The State has utilized the entire non-recurring central assistance for the procurement of sanctioned kitchen devices.

Non recurring central assistance of Rs. 725.15 lakh was released during 2013-14 and 2014-15 for the replacement of kitchen devices in 14503 schools. The State has utilized Rs. 267.95 lakh non-recurring

central assistance for the replacement of sanctioned kitchen devices ie. State could not utilized Rs. 457.20 lakh for replacement of 9144kitchen devices. The State may utilize the remaining central assistance for replacing kitchen devices in 9144 schools during 2018-19.

3. Data Entry Status on the MIS Web Portal

MIS data entry: Ministry of HRD, Department of Education and Literacy have developed MIS web portal for the online monitoring system. In this system there is mainly two inputs annual and monthly data entry web format to be filled by the State in timely manner. State should be replicated the data to the current financial year at the beginning of the session. Thereafter, Districts should freeze each of the school details in the Annual web format once in the year. Schools monthly utilization data has to be filled in monthly web format every month. The annual and monthly data entry status is given below:-

3.1. Annual Data Entry Status: It is appreciated that the State has completed all schools' annual data into the MIS web portal.

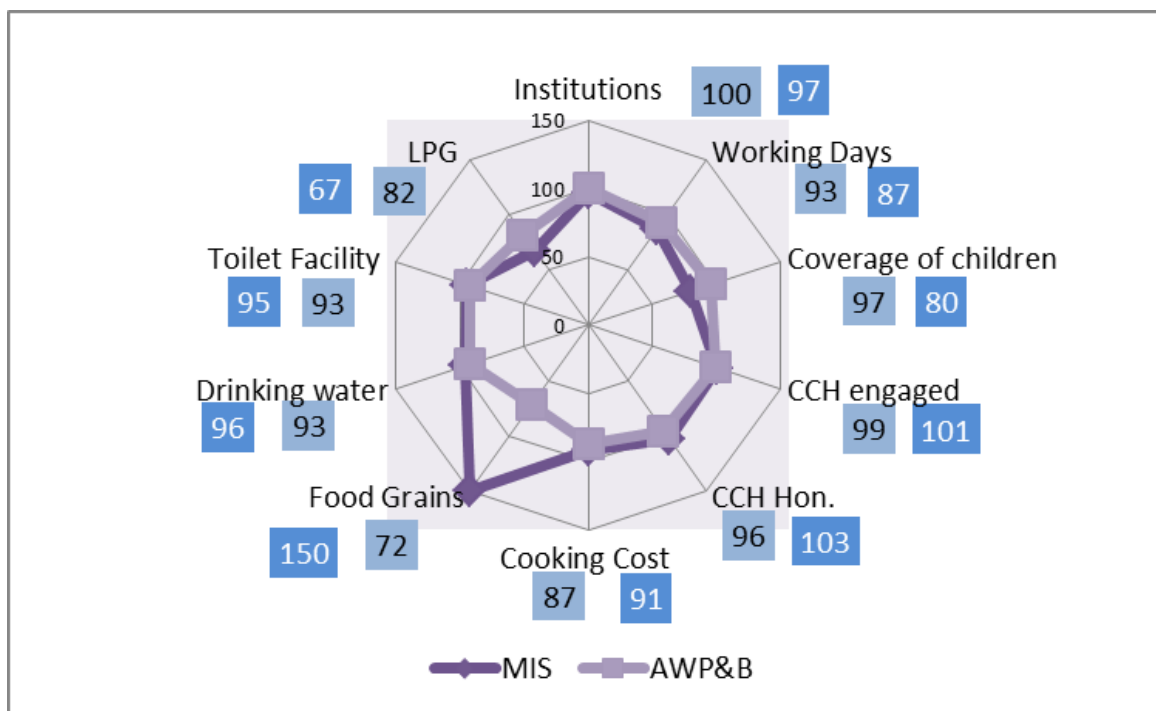
3.2. Monthly Data entry status: Average monthly data entry has done by the State is 99%. Few districts like Gurgaon (92%), Mevat (94%), Palwal (96%), Mahendragarh (97%) and Kaithal (98%) have to complete 100% monthly data every 10th day of the month into the MIS web portal in order to get the quality of online data.

S. No.	District	Monthly Data entry status for FY- 2017-18												Avg	
		Apr-17	May-17	Jun-17	Jul-17	Aug-17	Sep-17	Oct-17	Nov-17	Dec-17	Jan-18	Feb-18	Mar-18		
1	GURGAON	100%	100%	100%	100%	100%	100%	100%	100%	100%	100%	86%	73%	47%	92%
2	MEWAT	100%	100%	100%	100%	100%	100%	100%	100%	100%	100%	95%	85%	75%	94%
3	PALWAL	100%	100%	100%	100%	100%	100%	100%	100%	100%	100%	99%	92%	87%	96%
4	MAHENDRAGARH	100%	100%	100%	100%	100%	100%	100%	100%	100%	100%	100%	98%	64%	97%
5	KAITHAL	100%	100%	100%	100%	100%	100%	100%	100%	100%	100%	96%	92%	86%	98%
6	KARNAL	100%	100%	100%	100%	100%	100%	100%	100%	100%	100%	99%	98%	97%	99%
7	HISAR	100%	100%	100%	100%	100%	100%	100%	100%	100%	100%	100%	100%	97%	100%
8	JIND	100%	100%	100%	100%	100%	100%	100%	100%	100%	100%	100%	100%	99%	100%
9	FATEHABAD	100%	100%	100%	100%	100%	100%	100%	100%	100%	100%	100%	100%	100%	100%
10	YAMUNANAGAR	100%	100%	100%	100%	100%	100%	100%	100%	100%	100%	100%	100%	100%	100%
11	AMBALA	100%	100%	100%	100%	100%	100%	100%	100%	100%	100%	100%	100%	100%	100%
12	BHIWANI	100%	100%	100%	100%	100%	100%	100%	100%	100%	100%	100%	100%	100%	100%
13	FARIDABAD	100%	100%	100%	100%	100%	100%	100%	100%	100%	100%	100%	100%	100%	100%
14	JHAJJAR	100%	100%	100%	100%	100%	100%	100%	100%	100%	100%	100%	100%	100%	100%
15	KURUKSHETRA	100%	100%	100%	100%	100%	100%	100%	100%	100%	100%	100%	100%	100%	100%
16	PANCHKULA	100%	100%	100%	100%	100%	100%	100%	100%	100%	100%	100%	100%	100%	100%
17	PANIPAT	100%	100%	100%	100%	100%	100%	100%	100%	100%	100%	100%	100%	100%	100%
18	REWARI	100%	100%	100%	100%	100%	100%	100%	100%	100%	100%	100%	100%	100%	100%
19	ROHTAK	100%	100%	100%	100%	100%	100%	100%	100%	100%	100%	100%	100%	100%	100%
20	SIRSA	100%	100%	100%	100%	100%	100%	100%	100%	100%	100%	100%	100%	100%	100%
21	SONIPAT	100%	100%	100%	100%	100%	100%	100%	100%	100%	100%	100%	100%	100%	100%
	Total	100%	100%	100%	100%	100%	100%	100%	100%	100%	100%	98%	96%	93%	99%

3.3. Comparison of AWP&B- 2018-19 and MIS Data:

COMPONENT	MIS	AWP&B
Institutions	14484	14990
Working Days	211	225
Coverage of children	1278755	1545181
CCH engaged	30863	30193
CCH Hon. (Rs. in Lakhs)	7865.47	7288.25
Cooking Cost (Rs. in Lakhs)	15610.12	14886.46
Food Grains (in MTs)	62381.61	29754.18
Drinking water	14327	13910
Toilet Facility	14275	13910
LPG	10007	12336

Graphical representation of above data in terms of percentage:-



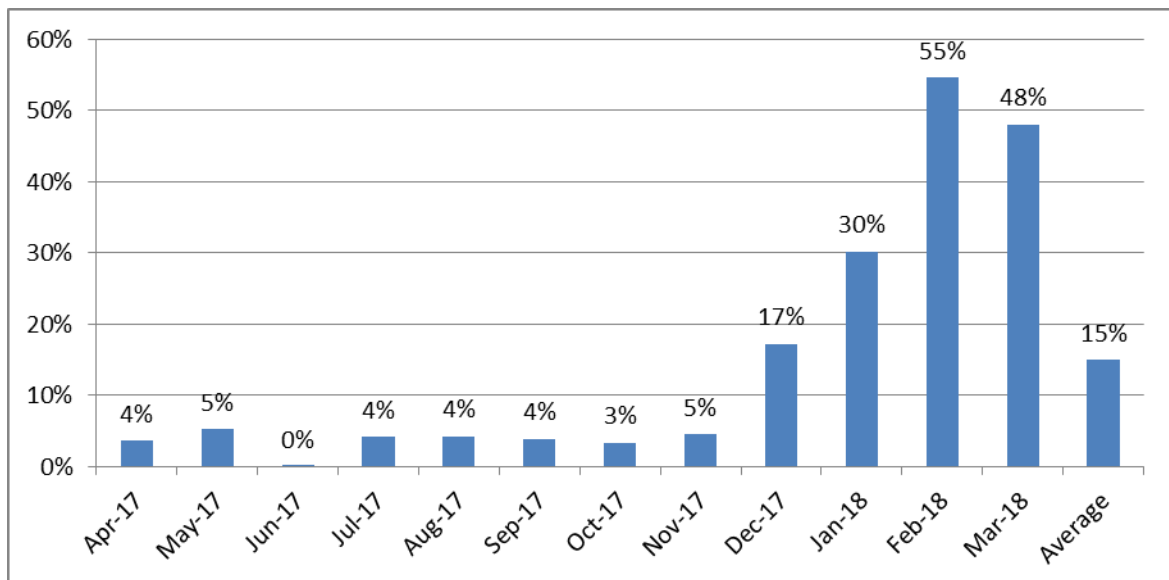
Above graph represented that the most of the data components wise provided in the AWP&B – 2018-19 are slightly matching with data entered into the MIS Portal except in the utilization of food grains. The food grains utilization data entered into the web portal is more than 100%. The State has to look into the matter and reconcile the both data.

Automated Monitoring System: State has reported daily meal served into the automated monitoring system through SMS. Month wise total schools reported through SMS based monitoring system are given below:

Month	Total Schools Reported
-------	------------------------

Month	Total Schools Reported
Apr-17	518
May-17	752
Jun-17	1
Jul-17	602
Aug-17	620
Sep-17	566
Oct-17	485
Nov-17	659
Dec-17	2491
Jan-18	4375
Feb-18	7901
Mar-18	6951
Average	2160

Graphical representation of the above month wise schools reported through SMS based automated monitoring system is given below:-



District wise on an average schools reported during the year are given below:-

S. No.	District Code	Total No. of School	Average Schools reported through ASM	%age
1	Ambala	803	180	22%
2	Bhiwani	1125	200	18%
3	Faridabad	388	14	4%
4	Fatehabad	613	184	30%
5	Gurugram	571	58	10%
6	Hissar	881	85	10%
7	Jhajjar	531	105	20%
8	jind	748	148	20%

S. No.	District Code	Total No. of School	Average Schools reported through ASM	%age
9	Kaithal	594	40	7%
10	Karnal	787	103	13%
11	Kurukshetra	732	95	13%
12	Mahendergarh	755	56	7%
13	Mewat	847	85	10%
14	Palwal	600	75	13%
15	Panchkula	422	47	11%
16	Panipat	430	30	7%
17	Rewari	660	98	15%
18	Rohtak	440	125	28%
19	Sirsa	831	107	13%
20	Sonipat	745	85	11%
21	Yamunanagar	982	243	25%
	Total	14485	2160	15%

On an average only 15% schools of the State of Haryana have reported daily meal served through SMS into the Automated Monitoring System. State has to look into the matter and take necessary steps to report daily meal served in the Automated Monitoring System.

3.4. AUTOMATED MONITORING SYSTEM

SMS based Automated Monitoring System (AMS) is in operation in the State. SMS is sent by the schools mid-day-meal incharge on registered number. Information collected under AMS is validated.

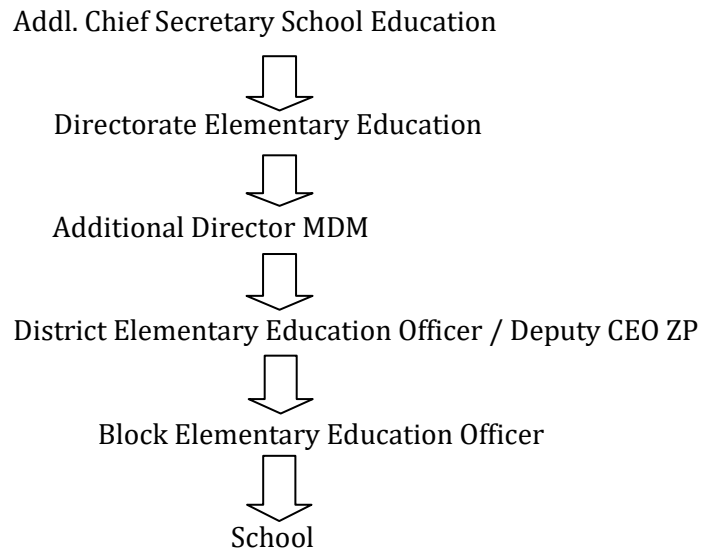
4. Fund Flow

Funds relating to mid-day-meal are being transferred from head office to respective District Education Officer's bank accounts through RTGS and further the funds are transferred to school level through District Authorities.

Type of Instalment	Date of receipt by				
	State	Directorate	District	Block	School
Ad-hoc	28-4-2017	08-06-2017	16-06-2017		
Balance of 1 st instalment	25-7-2017	18-10-2017	2/11/2017		
2 nd Instalment	22-12-2017	20-02-2018	9/3/2018		

Nearly two months delay in the release of ad-hoc installment up to district level. More than three months delay in the release of balance of first installment and nearly three months delay in the release of second installment.

5. Management Structure



A system has been developed to collect monthly, quarterly and yearly data regularly for smooth running of MDM Scheme. For formulation of plan, Block Elementary Education Office of every block collects the data from every school and after compiling it on block level, it is submitted to District Elementary Education Office at district level. District Elementary Education Office compiles it at district level and after that State plan is formulated at the Directorate level. During compilation of plan at state level, monthly and quarterly reports of the districts are also taken for assessment of the data, submitted by the districts. Cooking Cost, honorarium to cooks, kitchen sheds cum store amount is calculated on the basis of 60:40. 60% is borne by Centre Govt. and rest of 40% is borne by State Govt. Districts are being asked to calculate cooking cost and honorarium to cooks on the strength of enrolment of students studying in primary & Upper Primary Govt., Govt. aided and Local bodies Schools, no. of days and rate of cooking cost. Meetings are held at headquarter and at district level with district level functionaries regarding preparation of annual work plan.

6. Capacity Building

26909 Cook Cum Helpers have been imparted training out of 30,159 engaged under Mid Day Meal Scheme across the State during this financial Year i.e. 2017-18 Training has been imparted to 4175 cook cum Helpers by Master Trainers. Training has not been given to those cook Cum Helpers where ISCKON is providing cooked Mid Day Meal.

7. Grievance Redressal Mechanism

A Grievances Cell has been established in the Mid-Day-Meal branch for receiving complaints through post, email at email address mdmhry@gmail.com, telephone no. 0172-2584522 and CM Window Portal. The Nodal Officer contacts complainants on phone for resolving their grievances. Enquiry is held by the officers of Head Quarter/ Field

Officers on the complaints of serious nature.. The complaint on CM's Window is to be resolved within a month. The nature of complaints generally relate to misuse of powers by In-charge of mid day meal scheme; Cook cum Helpers regarding their removal, delay in the payment of their honorarium. Low quality of meals etc.

8. Testing of Meal by accredited labs

At present testing of meals is being done at two institutes namely CSIR Institutes/ NABL accredited laboratories and FSSAI accredited laboratories for undertaking testing of mid day meal for food safety and contamination and also food samples are taken by the food safety office of every district. 35 meal samples were tested by these laboratories during 2017-18. All the 35 meal samples were found to be as per norms.

9. Community participation:

i) **Tasting of meal:** Head of the school ensures the quality and quantity of food and he/she has to taste the Mid Day Meal himself/herself along-with SMC before serving the same to the students. In-charge mid day meal and another adult person should taste the meals and record their views in the taste register.

ii) **Involvement of Community through the Concept of Tithi Bhojan**

Every third Tuesday of the month is celebrated as girl student's birthday jointly as "Beti Ka Janamdin-School Me Abhinandan". Parents are also invited to these celebrations and be given a window of free participation in the MDM and other activities of the school.

10. **Social Audit :** Social audit has not been conducted at the school level

11. Monitoring & Supervision

School Management Committee is responsible for supervision and monitoring of preparation of mid day meal. Teacher In charge of Mid-Day-Meal Programme maintains the day to day record in the Cash Book and food-grains utilization. The Department has recruited 4 monitoring officers at division level and 27 Account Executives at Block and district level, 21 Programme Executives at district and 1 Programme Executives at headquarter level. Monitoring officers have been entrusted with responsibility to visit at least 50 Schools in a month and Account Executives/Programme Executives visit at least 20 schools in a month. Account Executives and Programme Executives get telephonic information of at least 10 Schools Daily.

12. Rashtriya Bal Swasthya Karyakaram:

The health check up Programme is going on in the schools in convergence with the Health Department. Health check up of 1394448 was carried out during 2017-18 and 1394448 children were given Iron and Folic Acid tablets. De-worming tablets were given to 2788896 children. Measurement of height and weight is done at the school level. 542 children suffering from refractive error have been given spectacles.

13. **Kitchen Gardens:** The State does not have information about the availability of kitchen gardens in the schools.

14. **Aadhar enrolment:** 1589909 students have been enrolled under Aadhar out of 1601082 enrolled children. The enrolment of 5397 Students is in progress. The remaining 5776 students are yet to be enrolled under Aadhar.

15. **NGOs:** ISKCON Food Relief Foundation (NGO) has been engaged for providing cooked Mid Day Meal up to 31.03.2019 in four districts namely Faridabad, Gurgaon, Palwal except Hathin and three block of Kurukshetra district namely, Thanesar, Ladwa and Pehowa. Maximum distance is 40-50 K.M and time taken is 1:30 to 2:00 hours for delivery of food in sealed containers. Heads of the schools/MDM in-charge are responsible for receiving cooked meals.

S. No.	Component	PAB Approval 2017-18	Proposal for 2018-19	Recommendations of Appraisal Team
1	Institutions			
1.1	Primary	8991	8118	8118
1.2	Upper Primary	5735	6837	6837
1.3	NCLP	35	35	35
2	Children			
2.1	Primary	841135	952828	924812
2.2	Upper Primary	579943	636205	628880
2.3	NCLP	5415	2553	2553
Total		1426493	1612836	1556245
3	Working Days			
3.1	Primary	242	232	232
3.2	Upper Primary	242	232	232
3.3	NCLP	302	302	302
4	Cook cum Helper*			
4.1	Primary	30423	18652	18652
4.2	Upper Primary		11771	11771
5	Drought			
5.1	Children (Pry)	0	0	0
5.2	Children (U Pry)	0	0	0
5.3	Working days	0	0	0
5.4	Cook-cum-helpers	0	0	0
6	Non Recurring			
6.1	Kitchen cum Store	0	0	0
6.2	Kitchen Devices(New)	0	0	0
6.3	Kitchen Devices (Replacement)	0	0	0
7	Central Assistance (Rs. in Crore)			
7.1	Regular	138.79	148.12	143.40
7.2	Drought	0	0	0
7.3	Non-recurring			
i	Kitchen –cum-stores	0	0	0
ii	Kitchen devices(Rep)	0	0	0
7.3	Total	138.79	148.12	143.40

Appendix-I

HARYANA

QUANTIFICATION OF CENTRAL ASSISTANCE

A. Food grains

Sl. No.	Stage	No. of Children	Working days	Quantity in MTs.		
				Rice	Wheat	Total
Regular						
1	Primary (@ 100 gms per child per school day)	924812	232	15018.95	6436.69	21455.64
2	U. Primary (@150 gms per child per school day)	628880	232	15319.52	6565.51	21885.03
3	NCLP (@150 gms per child per school day)	2553	302	80.96	34.70	115.66
	Total	1556245		30419.43	13036.90	43456.33

B. Cost of Foodgrains, Cooking cost, Transport Assistance, Hon. to cook-cum-helpers and Management Monitoring and Evaluation (MME)

Sl. No.	Component	Amount admissible
		(Rs. in lakh)
1	2	3
Primary		
1	Cost of Food grains @ Rs. 3000/- per MT for Rice and @ Rs.2000/- per MT for Wheat	579.30
2	Unit Cooking Cost- Rs. 4.13 per child per day	
2.1	Central Share @ Rs. 2.48 per child per day	5321.00
2.2	Minimum Mandatory State Share @ 1.65 per child per day	3540.18
3	Transportation Cost @ Rs. 750.00 Per MT food grains	160.92
4	Honorarium for cook cum Helper	
4.1	Central Share - (Rs 600 x 10 months)	1119.12
4.2	State Share - (Rs. 400 x 10 months)	706.26
5	Management Monitoring and Evaluation (MME) @ 1.8% of i) Cost of food grains ii) Cooking cost iii) Cost of transportation and iv) Honorarium to cook – cum-helpers	129.25
Total Central Share		7309.58
Upper Primary		

6	Cost of Food grains @ Rs. 3000/- per MT for Rice and @ Rs.2000/- per MT for Wheat	590.90
7	Unit Cooking Cost- Rs. 6.18 per child per day	
7.1	Central share @ Rs.3.71 per child per day	5412.90
7.2	Minimum Mandatory State Share @ Rs.2. 47 per child per day	3603.73
8	Transportation cost @ Rs. 750.00 Per MT food grains	164.14
9	Honorarium for cook cum Helper	
9.1	Central Share - (Rs 600 x 10 months)	706.26
9.2	Minimum Mandatory State Share- (Rs. 400 x 10 months)	470.84
10	Management Monitoring and Evaluation (MME) @ 1.8% of 1) Cost of food grains 2) Cooking cost 3) Cost of transportation and 4) Honorarium to cook – cum-helpers	123.74
TOTAL Central Share		6997.92

C. Cost of Foodgrains, Cooking cost, Transport Assistance, Hon. to cook-cum-helpers and Management Monitoring and Evaluation (MME) for NCLP

11.	Cost of Food grains @ Rs. 3000/- per MT for Rice and @ Rs.2000/- per MT for Wheat	3.12
12.	Unit Cooking Cost- Rs. 6.18 per child per day	
12.1	Central share @ Rs.3.71 per child per day	28.60
12.2	Minimum Mandatory State Share @ Rs.2. 47 per child per day	19.04
13.	Transportation cost @ Rs. 750.00 Per MT food grains	0.87
14	Management Monitoring and Evaluation (MME) @ 1.8% of 1) Cost of food grains 2) Cooking cost 3) Cost of transportation and 4) Honorarium to cook – cum-helpers	0.59
Total Central Share		33.18
Grand Total (Primary + Upper Primary + NCLP)		14340.68

D. Non-recurring :

Item		Central Share	State Share
Kitchen-cum-store		0	0
Kitchen Devices	New	0	0
	Replacement	0	0

E. Total Requirement of Funds for 2018-19

(Rs. in lakh)

Component		As per revised funding pattern in the ratio of 60/40	
		Centre Share	Minimum Mandatory State share
Recurring	Normal	14340.68	8379.88
	Drought	0	0
Non- recurring		0	0
Total		14340.68	8379.88

--oOo--